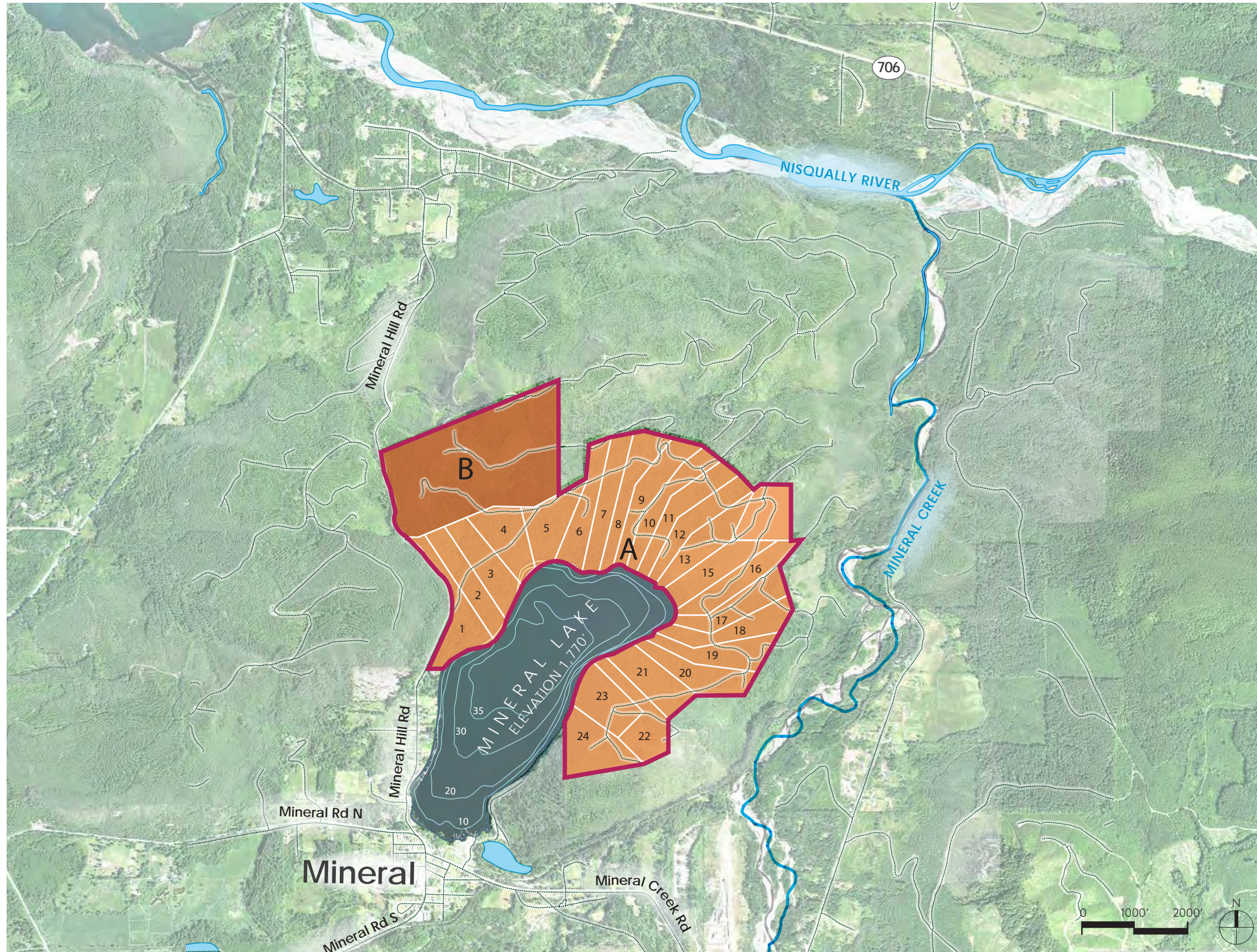


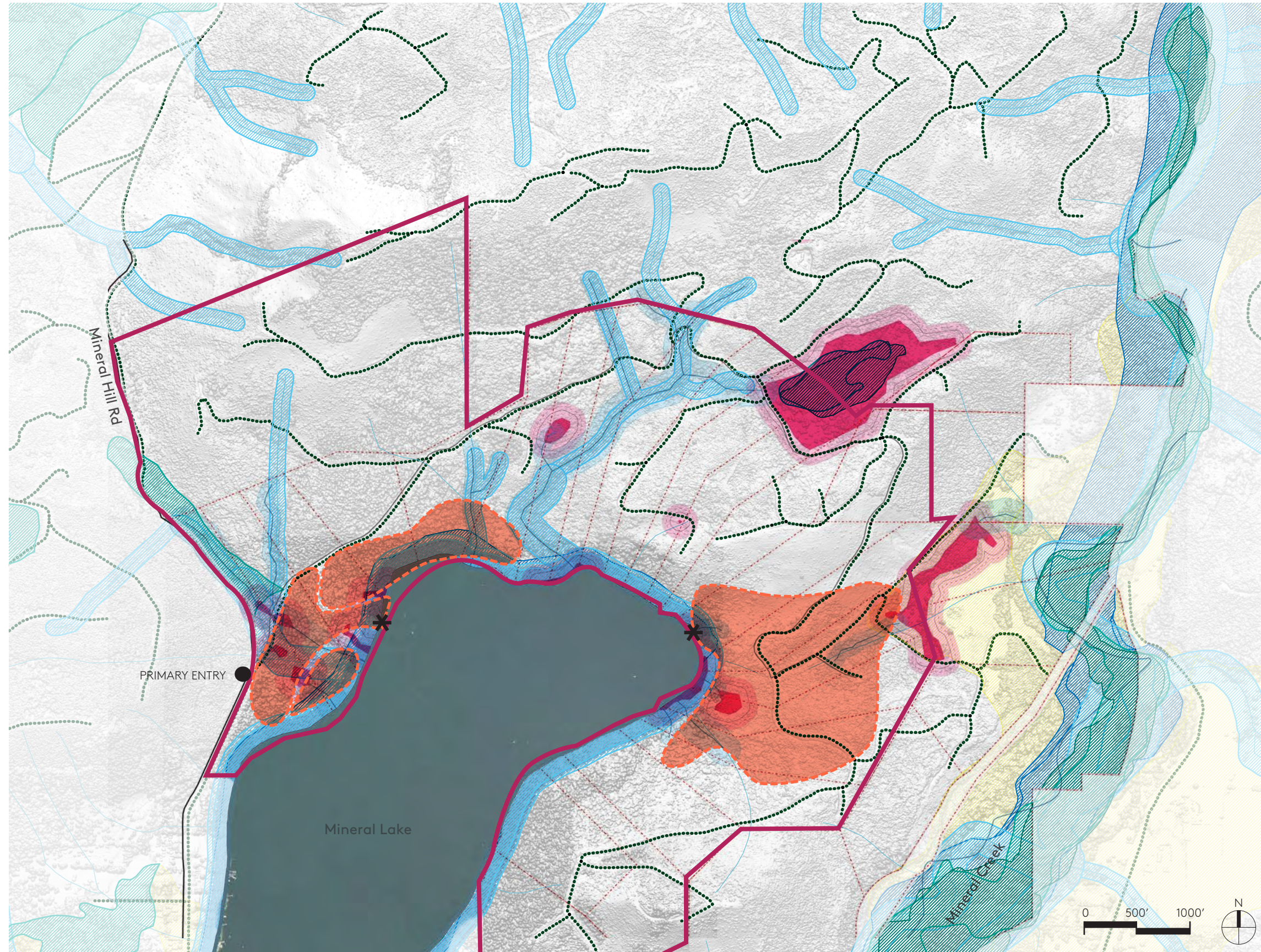
COMPREHENSIVE PLAN AMENDMENT: VICINITY MAP



LEGEND

- A** PROPERTY (500 ACRES)
- B** FOREST RESERVE (143 ACRES)
- PROPOSED MASTER PLAN RESORT OVERLAY
- MAJOR ROADS
- FOREST ROADS

COMPREHENSIVE PLAN AMENDMENT: CONCEPTUAL DEVELOPMENT AREAS



POTENTIAL DEVELOPMENT AREAS LEGEND

- EXISTING ROADS
- POTENTIAL DEVELOPMENT ZONE
- POTENTIAL LAKE ACCESS
- EXISTING PROPERTY ENTRANCE
- PROPOSED MASTER PLAN RESORT OVERLAY
- PARCEL LINE

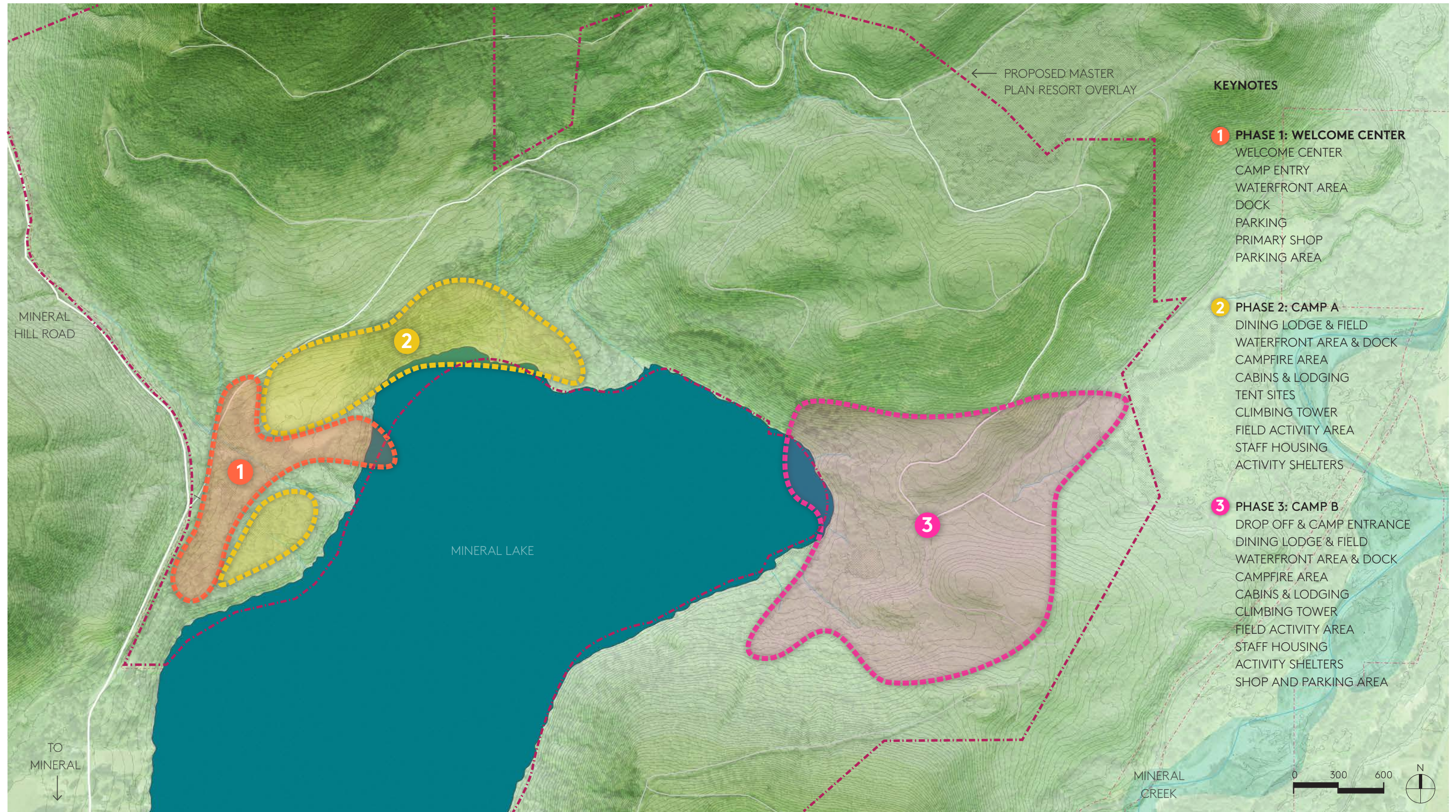
*The highest intensity development will be concentrated in the potential development zones with slopes less than or equal to 15%.

CRITICAL AREAS LEGEND

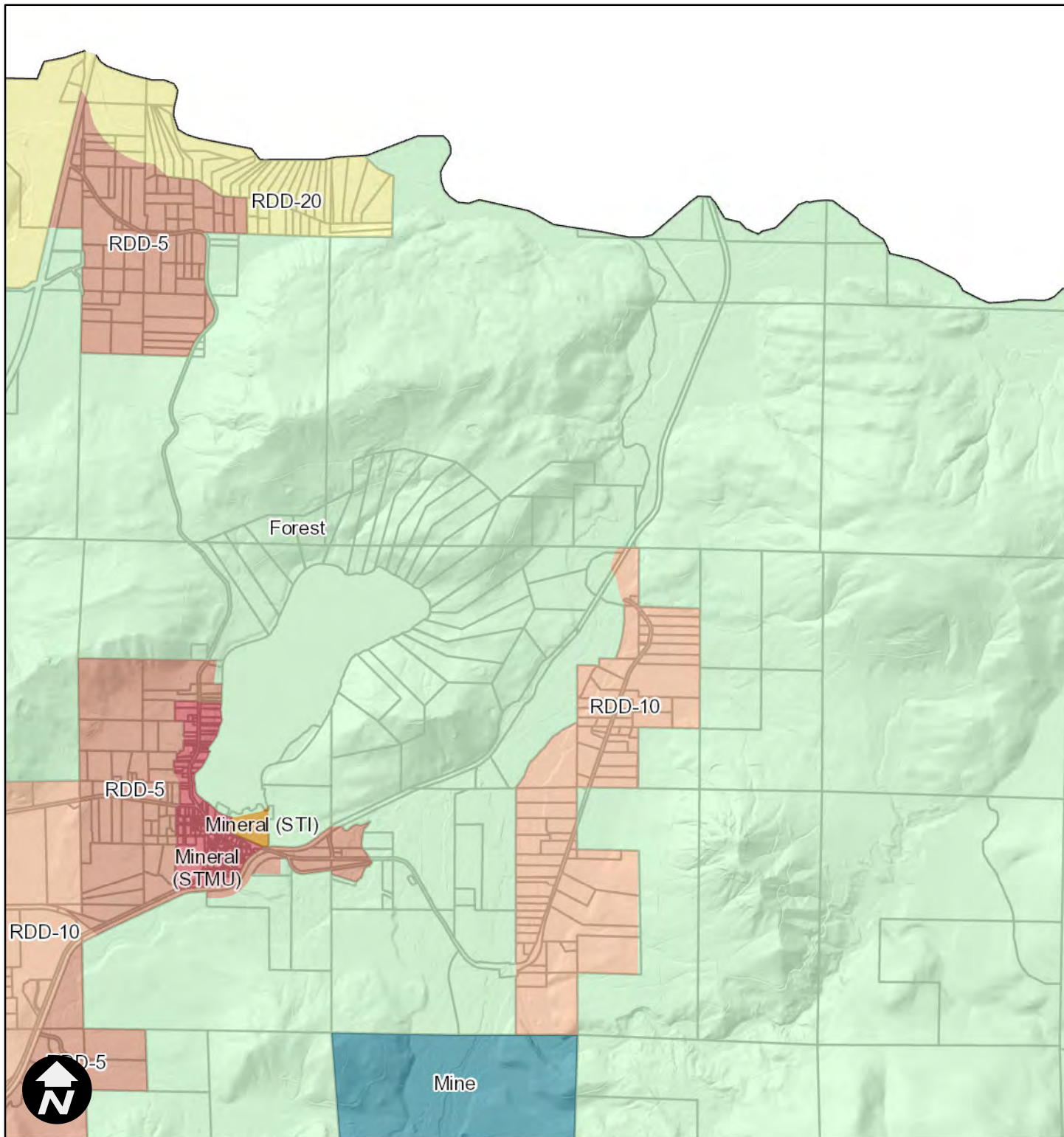
- 200' MINERAL LAKE BUFFER
- STREAM BUFFERS
- WETLANDS
- HYDRIC SOILS
- FEMA 100 & 500 YEAR FLOODPLAIN
- CRITICAL AQUIFER RECHARGE AREA
- FIELD DELINEATED WETLANDS (PRELIMINARY)
- FIELD DELINEATED WETLAND BUFFERS (PRELIMINARY)

Stream and wetland features shown are considered preliminary as they were not formally delineated during the survey. Buffers are estimated and subject to change pending a formal delineation. Draft building and road infrastructure locations are based on preliminary data from county and state GIS, LIDAR, and Geoenvironmental Engineers' early field work. Locations will modify as more detailed site analysis and engineering is completed.

COMPREHENSIVE PLAN AMENDMENT: FUTURE CAMP USES



Mineral Lake Existing LU and Zoning



12/22/2020, 11:21:20 AM

1:36,112

0 1,600 3,200 6,400 ft
NAD 1983 StatePlane Washington South FIPS 4602 Feet



Lewis County does not guarantee the accuracy of the information shown on this map and is not responsible for any use or misuse by others regarding this material. It is provided for general informational purposes only. This map does not meet legal, engineering, or survey standards. Please practice due diligence and consult with licensed experts before making decisions.

© Lewis County GIS