



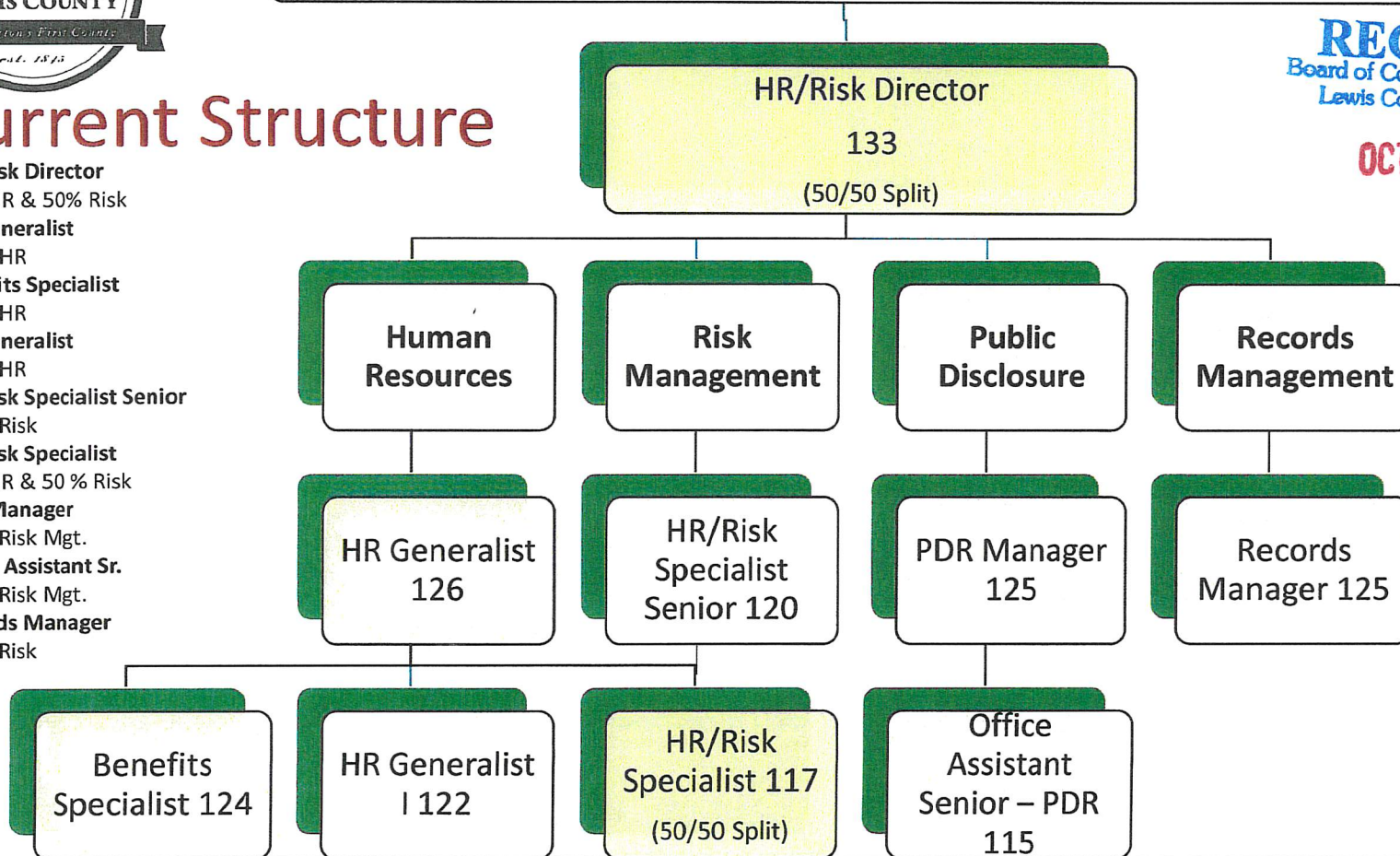
HR/Risk Management Department

RECEIVED
Board of County Commissioners
Lewis County Washington

OCT 10 2022

Current Structure

- HR/Risk Director**
50% HR & 50% Risk
- HR Generalist**
100% HR
- Benefits Specialist**
100% HR
- HR Generalist**
100% HR
- HR/Risk Specialist Senior**
100% Risk
- HR/Risk Specialist**
50% HR & 50% Risk
- PDR Manager**
100% Risk Mgt.
- Office Assistant Sr.**
100% Risk Mgt.
- Records Manager**
100% Risk





The yellow highlighted boxes are proposed changes to the current structure.

The Deputy Director and Public Defense Coordinator are both new proposed positions. Under this proposal, the current budgeted HR Generalist would be frozen and the FTE would increase from a 126 to a 130. Also, The HR Benefits Specialist would be frozen and decreased to an HR Specialist from a 124 to a 121.

HR/Risk Management Department

RECEIVED
Board of County Commissioners
Lewis County Washington

OCT 10 2022

