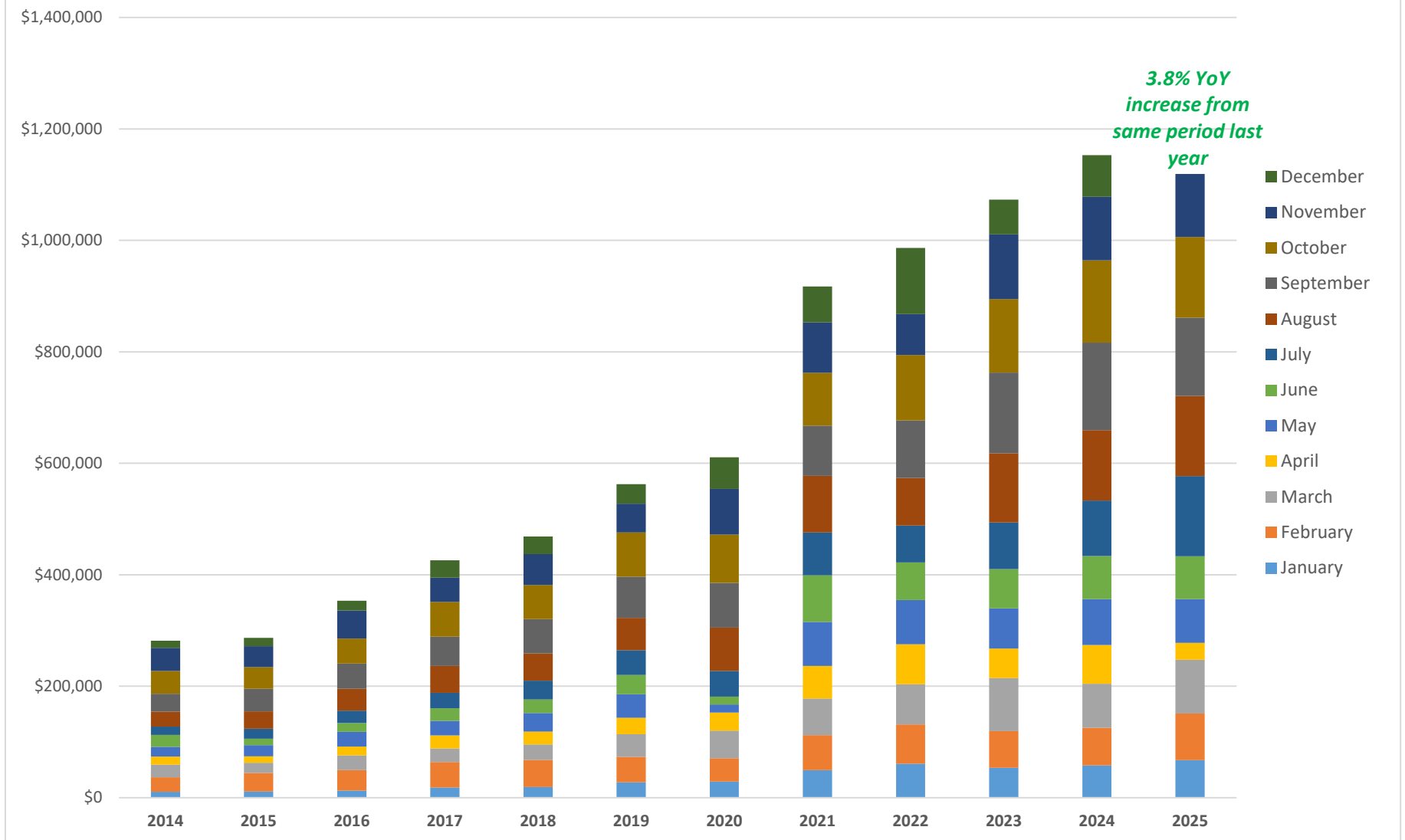
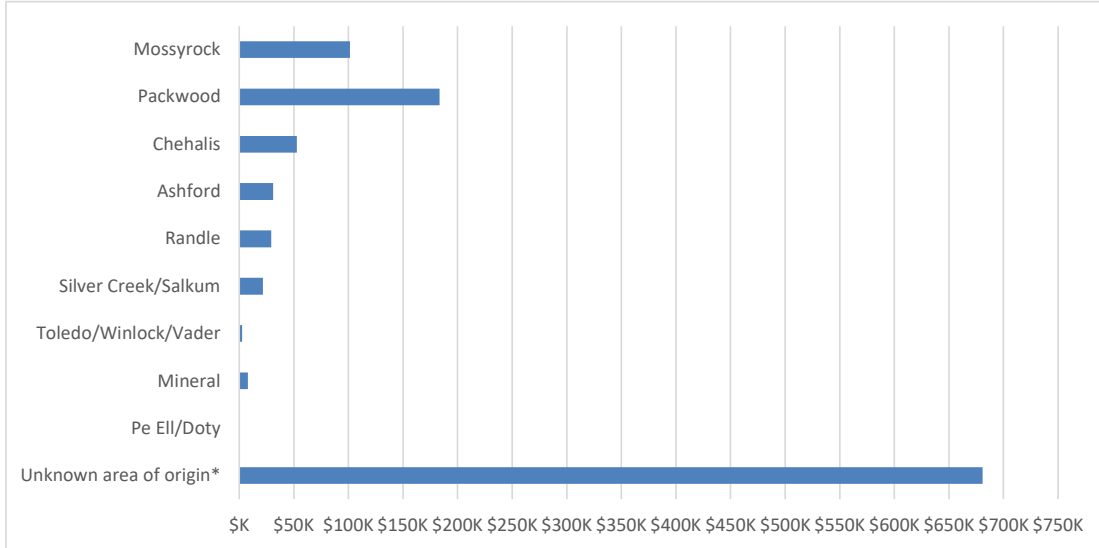


### Lewis County - Unincorporated Special Hotel/Motel Tax & Transient Rental Tax Distribution through November 2025



Distributions are received from DOR two months after collections (i.e., August collections are distributed in October).

Lodging Report - November 2025  
**YTD Lodging Tax Distribution Summary for November 2025**  
(Unincorporated Lewis County)



Area	Special Hotel/Motel	Transient Rental	Total	Percent
Mossyrock	\$50,666.74	50,666.73	\$101,333.47	9.1%
Packwood	91,470.70	92,082.98	183,553.68	16.5%
Chehalis	26,398.86	26,398.86	52,797.72	4.8%
Ashford	15,482.71	15,623.45	31,106.16	2.8%
Randle	14,690.79	14,690.78	29,381.57	2.6%
Silver Creek/Salkum	10,871.47	10,871.47	21,742.94	2.0%
Toledo/Winlock/Vader	1,325.62	1,325.61	2,651.23	0.2%
Mineral	3,981.54	3,981.54	7,963.08	0.7%
Pe Ell/Doty	-	37.25	37.25	0.0%
Unknown area of origin*	348,481.47	332,401.36	680,882.83	61.3%
	<b>\$563,369.90</b>	<b>\$548,080.03</b>	<b>\$1,111,449.93</b>	<b>100.0%</b>

Distributions are received from DOR two months after collections (i.e., Aug collections are distributed in Oct).

**Special Hotel/Motel Tax:**

This tax is in addition to the retail sales tax (e.g., it is passed on to the consumer). The funds are distributed by the State Treasurer to the levying cities and counties. They may be used for promotion of tourism or construction and operation of tourism-related facilities.

**Transient Rental Income Tax:**

This is deducted from the state retail sales tax and is not an additional tax for the customer. Retail sales tax funds are used for the general fund, water quality account, health services account, drug enforcement account, and the salmon recovery account. The Transient Rental Income Tax (2%) is deducted from the State's retail sales tax funds and is also distributed to the cities and counties for tourism.

The gross taxable income reported under the special hotel/motel tax section will differ from the gross transient rental income reported for each location, due to separate timing and cutoffs at DOR.

**Audit/Compliance Authority:**

Washington State Department of Revenue (DOR)

*Prepared by the Lewis County Treasurer's Office from information provided by DOR*

*\*Includes business offices addressed outside of Lewis County, such as Airbnb in San Francisco.*

*Note: Detailed subsheets are confidential*